

To help offer the best experience possible, RSNA uses cookies on its site. By browsing here, you acknowledge our terms of use. To find more information about our cookie policy visit [here](#).

[OK](#)[Find out more](#)[Home](#) | [Research](#) | [Funding opportunities](#) | [Research grants](#) | [Research Seed Grant](#)

Research

Funding opportunities

[Education Grants](#)[Emerging Issues grant](#)

Research grants

[Medical Student Research Grant](#)[Research Scholar Grant](#)[Research Seed Grant](#)[Resident/Fellow Research Grant](#)[Application process FAQs](#)[Grant writing resources](#)[Research development guides](#)[Imaging research tools](#)[Research awards](#)[Quantitative Imaging
Biomarkers Alliance](#)

Research Seed Grant

This R&E Foundation Research Seed Grant gives investigators around the world the chance to define objectives and test hypotheses in preparation for larger grant applications at corporations, foundations and government agencies. The seed data from the projects we fund will give investigators a better idea of feasibility and directionality of research before applying for more funds from other sources.

Applications

We are now accepting grant applications for the 2023-24 grant cycle.

Application deadline: Wednesday January 18, 2023

Nature of projects

Any area of research in the radiologic sciences is eligible for funding. Projects may include any of the following:

- Hypothesis-driven basic science
- Clinical investigation
- Drug, device or therapy development
- Comparative effectiveness
- Evidence-based radiology
- Ethics and professionalism
- Quality improvement
- Clinical practice efficiency
- Imaging informatics

Please note, though any of the above topics are accepted, projects focused on advancing imaging science, developing or evaluating medical imaging technology or making innovative use of imaging science to answer important biologic or clinical questions are encouraged.

This grant mechanism will be open to all levels of radiologic investigators, with an established academic appointment.

Applications should describe the unique nature of the research effort independent of existing research efforts. Greater emphasis will be placed on the likelihood of this research to attract future funding given the nature and extent of the preliminary data collected within the cycle of the grant.

To help offer the best experience possible, RSNA uses cookies on its site. By browsing here, you acknowledge our terms of use. To find more information about our cookie policy visit [here](#).

[OK](#)[Find out more](#)

Award amount

Grant recipients receive up to \$60,000 for a one year project to be used as support for the preliminary or pilot phase of that project. Funds may not be used to supplement previously-secured major funding.

Eligibility

Any investigator from anywhere in the world with an academic appointment may apply for this grant, as long as you are an RSNA member. If you're a non dues-paying member, your scientific advisor or your co-investigator must be a dues-paying member. You must also meet the following criteria:

All applicants

- You must hold a full-time faculty position in a radiology, radiation oncology or nuclear medicine department at an educational institution.
 - If you aren't currently a full-time faculty member, but will be by the time funding starts, a letter from the department chair must be included in your application.
- You cannot have been a principal investigator on a grant or contract totaling more than \$60,000 in a single year. This includes single and combined grants and contracts from government, private and commercial sources.
- You and your principal investigators cannot be employed by any for-profit, commercial company in the radiologic sciences.
- You cannot submit more than one grant application to the RSNA R&E Foundation a year and cannot have a concurrent RSNA grant.
- Funding from other grant sources must be approved by foundation staff if it wasn't described in the original research plan.

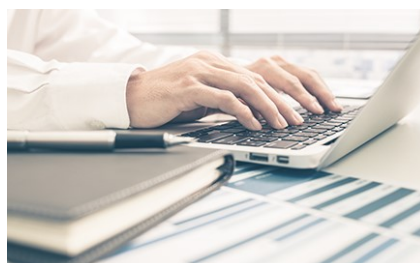
North American applicants

- You must have completed advanced training and be certified by the American Board of Radiology (ABR) or The Royal College of Physicians and Surgeons of Canada or are on track for certification.

International applicants

- You must have completed advanced training and be certified by the radiology board in your country.

For more detailed information, including application instructions, please review the [policies and procedures](#) (PDF) for this grant.



Apply now

To apply for this grant, please log in and use our online grant application system. You must be a member to apply.

[Apply Now](#)

Applicant resources

To help offer the best experience possible, RSNA uses cookies on its site. By browsing here, you acknowledge our terms of use. To find more information about our cookie policy visit [here](#).

[OK](#)[Find out more](#)

We're here to help you succeed. Check out our [grant writing workshops](#), [research and development guides](#) and [application process FAQs](#).

Current recipients

To view additional recipients from prior years, please use our online [grant and award recipient search tool](#).

About the R&E Foundation

Our Research & Education Foundation provides a critical source of support for investigators. Since the Foundation's inception in 1984 we've awarded over 1,600 grants. That's \$70 million in funding for radiology research and improving patient care.

[Learn more](#)

General: 1-630-571-2670

Membership: 1-877-776-2636

820 Jorie Blvd., Suite 200

Oak Brook, IL 60523-2251 USA

Company

[About RSNA](#)[Event calendar](#)[Jobs at RSNA](#)[Contact](#)

Information for:

[Patients](#)[Companies & exhibitors](#)[Media](#)[Career Connect](#)[Promotional Opportunities](#)[RSNA News](#)[R&E Foundation](#)

Connect with us



Copyright © 2022 Radiological Society of North America | [Terms of Use](#) | [Privacy Policy](#) | [Cookie Policy](#) | [Feedback](#)