



TEMPLETON WORLD
CHARITY FOUNDATION

Exploring Our Common Humanity in Diverse Contexts

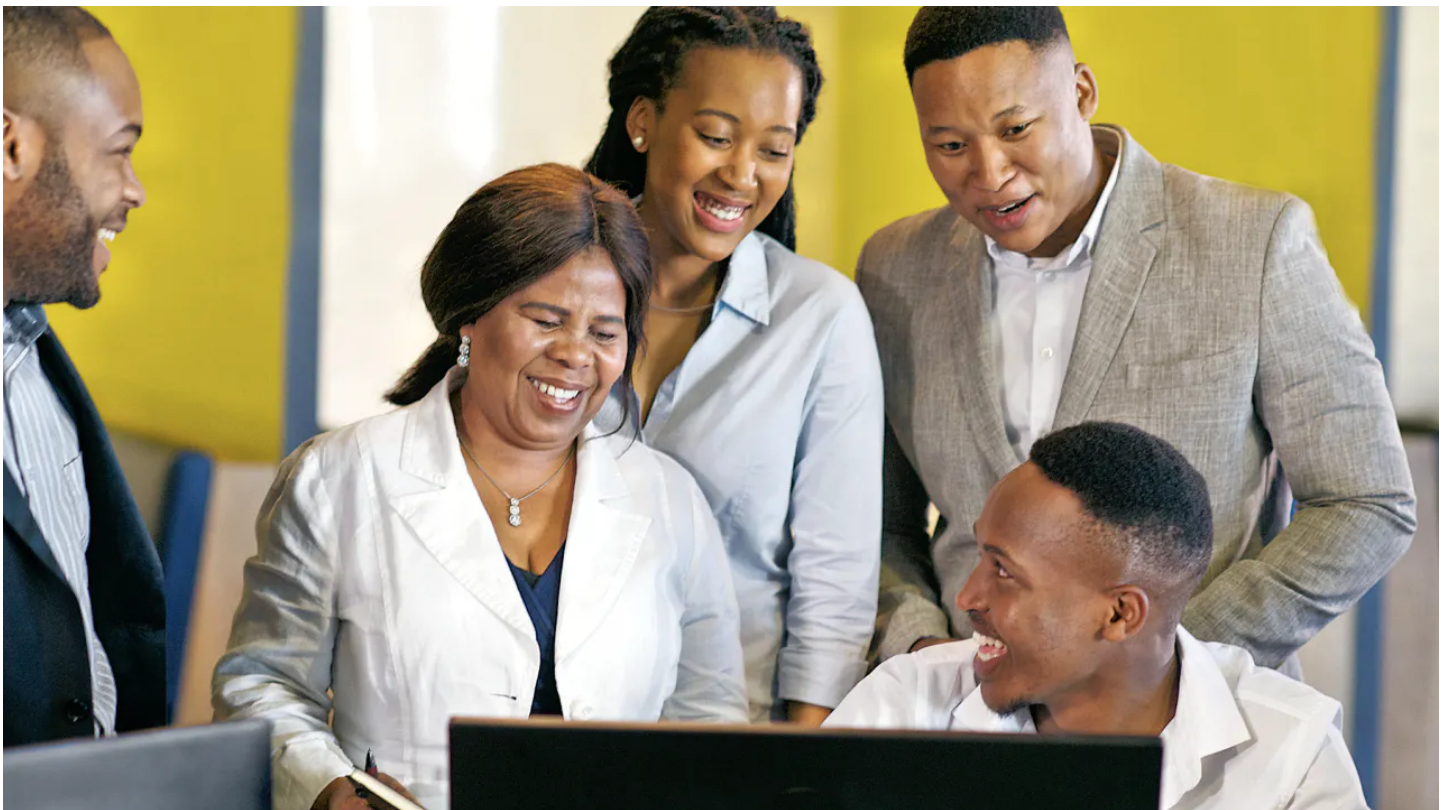
Request for Proposals

Regional Landscaping Reviews

Open March 1, 2022 through April 14, 2023

Templeton World Charity Foundation is exploring the feasibility of establishing up to **three regional Collaborative Research Hubs** that will provide opportunities to advance scientific research on topics and outcomes central to human flourishing. We currently seek applicants to undertake landscaping reviews which will help guide these future investments by improving our knowledge of the relevant research and partnership opportunities in different regions worldwide.

This RFP falls under **TWCF's Exploring Our Common Humanity in Diverse Contexts** priority.



The goal of this RFP

We seek to award three grants of up to \$260,000 USD to map the research, leadership, training, and partnership landscapes for the study of human flourishing in one or more of the following regions: Latin America, the Caribbean, Africa, the Middle East, South Asia, South-East Asia, and East Asia.

Scroll down to see our [Requirements](#), [Process and Timeline](#), [Webinar](#), and more.

For more information, download the Request for Proposals Document.

[Download PDF](#)

For complete instructions on how to apply, download our [Application Guidance Document](#).

[Download PDF](#)

ECoH RFP Informational Webinar

Thursday, March 9, 2023: 2pm - 4pm UTC

Join this webinar to learn more about if and how this RFP applies to your work.

[Register for the Webinar](#)

Requirements

Each Landscaping Review is expected to include the following elements:

Research

- A map of top-performing researchers (and their departments and institutions) currently undertaking work in target disciplinary areas, including (but not restricted to): neuroscience, psychology, anthropology, sociology, economics, philosophy, theology, and the relevant subdisciplines within each. Also included are integrative disciplines such as the developmental sciences and cognitive sciences.
- An assessment of the relevance of these researchers' current work to TWCF's interest in interdisciplinary, discovery-oriented research on fundamental questions that pertain to what it means to be human and how humans flourish

Leadership

- An assessment of the potential for identified researchers to:
 - Develop a collaborative scientific research agenda consistent with TWCF's aim to advance interdisciplinary scientific research on topics and outcomes central to human flourishing
 - Secure and manage research funds
 - Build partnerships with other researchers, institutions, or scientific societies
- A list of 10 candidates who may be suitable ECoH Hub leaders and rationale for the priorities and recommendations

Training/Capacity-building

- A review of capacity-building needs and interdisciplinary training opportunities available to researchers seeking to conduct research on human flourishing
- Prioritization of training needs and recommendation of strategies to meet those needs, as well as rationale for the priorities and recommendations

Partners

- A review of funding sources (private and public) currently available to researchers in the region to pursue discovery-oriented research on fundamental questions about human flourishing
- Identification of other potential funders and rationale for partnership opportunities with TWCF to support these hubs, now or in the future
- Identification of international and regional scientific societies with membership in the regions, focused on topics related to human flourishing, and recommendations for how to best engage these societies and their membership
- Identification and description of existing disciplinary or transdisciplinary research networks and centers (including, for example, research topics, represented disciplines, publication outlets, preferred media sources, meetings etc.) that are relevant to the science of human flourishing

- Any other analyses deemed critical to inform TWCF's ECoH Hubs strategy
-

Outputs/Deliverables

Expected outputs from this work, to be completed and delivered to TWCF before the end of the grant, include:

- Exploratory meetings with regional research, policy, and practice community leaders to contribute to report fact-finding and analysis
 - A report of 80 pages minimum, summarizing the elements outlined above (12 months after project start date, no later than October 2024)
 - A PowerPoint presentation of main findings and key statistics (12 months after project start date, no later than October 2024)
 - A public-facing report for stakeholders, such as research funders, senior management of research institutions, or policymakers (14 months after project start date, no later than December 2024)
 - A regional stakeholder convening to disseminate findings from the report, particularly those that may be of interest to potential funding partners for TWCF (16 months after project start date, no later than February 2025)
 - Final narrative and financial report (18 months after project start date, no later than March 2025)
-

We seek expressions of interest from individuals and/or organizations who have relevant skills and experience in the following areas:

- Excellent understanding of the academic and research funding landscape in priority regions
- Excellent connections and networks with research institutions and funders in priority regions
- Excellent knowledge of academic research on topics and questions of central importance to human flourishing (see Appendix 1)
- Good understanding of TWCF's mission and goals
- Relevant methodological expertise and experience
- A proven track record of producing high-quality deliverables
- Strong communication and organizational skills

A total of three awards of up to US \$260,000 each will be offered. Each award is expected to fund a Landscaping Review of one or more of the following regions: Latin America, the Caribbean, Africa, the Middle East, South Asia, South-East Asia, and East Asia.

Applicants may submit applications for more than one award as listed above. Each award application will be considered on an individual basis and administered via a distinct agreement with the foundation.

Applicants from a wide range of organizations are invited to apply, including and not limited to; academic institutions, think tanks, consultancies, etc.

Prospective hub leaders are not excluded from applying to this RFP, however, their landscaping analysis should be impartial to their research agendas.

Process and Timeline

How to Apply

The application process involves two steps:

1. Register your interest by completing the brief [Expression of Interest form](#). Once you register, you should receive an email within 3 business days from the "Templeton Portal" with information on the next steps and how to access the application form.
2. Complete the full application form via TWCF's online grant application portal, [Fluxx](#), in advance of the submission deadline.

Timeline

- **Launch date: March 1, 2023**

- Webinar: [March 9, 2023, 2-4pm UTC](#)
- **Full Proposal Submission deadline: April 14, 2023**
- Announcement of finalists: May 12, 2023
- Announcement of awards: July 14, 2023
- Earliest start date: September 1, 2023
- Project duration: 18 months
- Maximum award amount
 - \$260,000 USD which includes up to 15 % indirect/overhead

Apply Now

Register and complete the application form at the Fluxx Portal.

Access the Fluxx Portal

[Accessibility](#) [Contact Us](#) [Our Policies](#)

